

SPECIFICATIONS

ATV2500

Working Load*: 2500 lb (1134 kg)
 Motor: 12V DC 1.5 hp (1.1 kw) peak
 Gearing: 3-stage planetary
 Gear Ratio: 145:1
 Braking: Mechanical and Dynamic
 Freespool Clutch: Cam action
 Wire Rope: 3/16" (4.8mm) x 50' (15.5m)
 Dimensions: 12.6"l. x 4.7" d. x 4.7" h.
 (320mm l. x 119mm d. x 119mm h.)
 Drum Diameter: 2.2" (55.9mm)
 Drum Length: 2.9" (73.6mm)
 Weight: 16 lb (7.26 kg)
 Switching Method: Handlebar Mounted Toggle
 Switching Mechanism: Heavy-Duty Sealed Solenoid
 Roller Fairlead: Standard, 4-way
 Wiring: 6 Gauge, Color Coded

* Performance based on the first layer of wire wrapped on drum

ROLLING LOAD CAPACITIES

ATV2500

Slope**	10% (6°)	20% (11°)	40% (17°)	100% (45°)
Lb***	12,563	8,503	5,385	3,213
kg**	5699	3857	2442	1457

Ratings assume a 10% coefficient of friction.

** A 10% slope is a rise of one foot in ten feet. Slope in approximate degrees is also shown above.

***All loads shown are for single-line operation. Double-line operation with optional pulley block approximately doubles capacity of winch.

PERFORMANCE

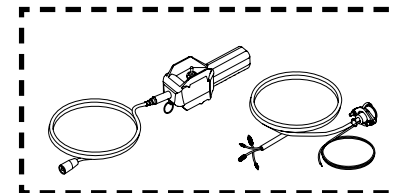
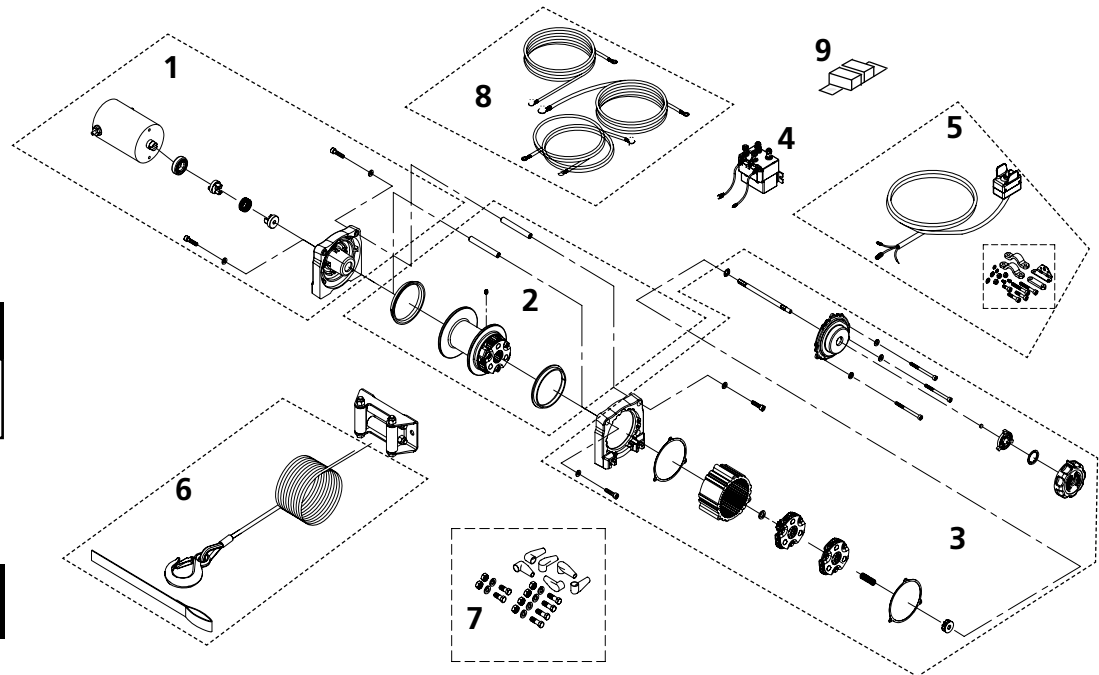
ATV2500

Wire Rope Layer	Max. Pulling Capacity lb	Max. Pulling Capacity kg	Load		*Speed		*Motor Current
			lb	kg	ft/min	m/min	Amps
1	2500	1134	0	0	18.0	5.0	14
2	2151	976	500	227	15.5	4.7	50
3	1888	856	1000	454	13.0	3.9	80
4	1682	763	1500	680	10.3	3.1	120
5	1516	688	2000	907	8.3	2.5	160
			2500	1134	6.3	1.9	210

*Performance based on the first layer of wire rope wrapped on drum

REPLACEMENT PARTS LIST - ATV2500

Reference Number	Description	Part Number	Qty
1	Motor Assembly	87-19014	1
2	Drum Assembly	87-19015	1
3	Gearbox Assembly	87-19016	1
4	Solenoid	87-19017	1
5	Toggle Switch Kit	87-19018	1
6	Wire Rope Assembly	87-19019	1
7	Mounting Hardware Kit	87-19020	1
8	Lead Wire Kit	87-19021	1
9	Circuit Breaker	87-22873-16	1



Optional Hand-held Remote and Socket
 P/N 2340200